

FUSION TECH SUPPORT: support@fusionrd.com or 925.217.1233 M-F 8am-5pm PST

STEP 1 - Installing Encore: Encore is a powerful media server with a built-in player for one zone of movie playback. This guide is designed to get you up and running quickly. For advanced features and more information, please refer to the installation manual. Please follow the steps below in order:

- 1** Connect network cable
Internet required for disc importation



- 2** Video Connections
Default is HDMI, if component is needed please order part FR-COM



- 3** For Encore Blu-Ray's Audio
Use special adapter to convert audio to HDMI



- 4** Audio Connections
If both analog and digital are required, please order part FR-D2A



- 5** Connect Power
Plug the power cord into the back of the Encore now and push the power button located on the front of the machine.

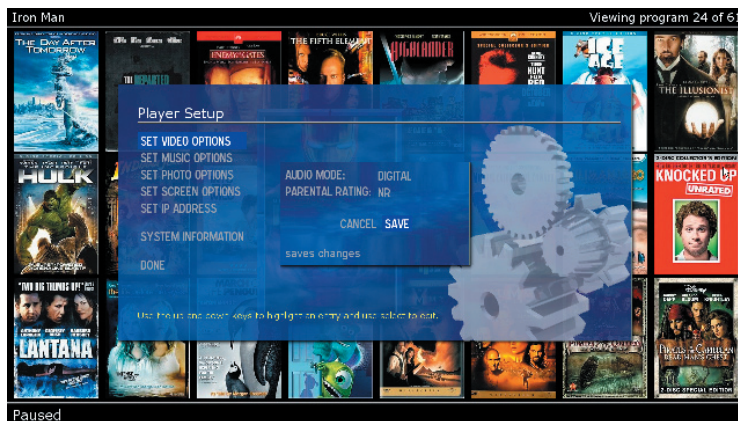


- 6** Recommended Accessories
Encore should be plugged into a UPS



Notes: Encore should be kept in a cool, well ventilated space. Do not connect Zone Players until Encore setup is complete and movie playback is working

STEP 2 - Onscreen Setup Menu: After unit boot up, the movie cover art screen will appear. Using the Fusion remote you can setup your system by accessing the onscreen setup menu, by selecting the gray + button on the left side of your remote (see example below)



The Onscreen Setup Menu allows you to set many of the systems features including:

- Audio output
- Screen resolution
- Overscan
- IP address
- Zone Rating
- Screen Saver

Setup Tips:

- If you do not see your sample movie after power up, make sure that you have a network connection (prior to power up!)
- If you do not hear sound, make sure you selected analog or digital in setup program. In certain situations an optical cable may be required
- When loading a DVD, if you see UNKNOWN in all capital letters, you have lost internet connectivity, check your network connections
- If video is not centered properly, please re-check the settings on your display (TV) before adjusting the Studio
- Video problems can also occur through HDMI switches, try first connecting directly to your display

Movie notes and button commands:

- DVDs load directly into the Encore DVD slot, press import button (button with red dot on it) to begin disc look up and importation
- Movies generally take 20 to 30 minutes to load, Encore will not be available during that time
- To select a movie, press either the PLAY or OK buttons
- Movie sidebar details (in Cover Art) can be seen using OSD Menu button on remote
- The yellow FILTER button in movie mode allows concentrated search capability
- The blue SORT button can be used after filtering movie list
- The number 0 button brings up an onscreen keyboard to search movies
- Movie title UNKNOWN during the movie loading means no internet access

Factory Resolution Reset

Encore has a powerful built-in scaler. If a resolution is selected that is higher than the display device is capable of, a black screen might occur. Should this happen, hold the Exit button down for 10 seconds and the system will default back to 720p.



Remote tip: The purpose of the Fusion remote is a tool for the integrator to setup the Fusion system and to be used to program a multi-function remote. It is not intended for use by the end-user.