

# Fusion Research



## Fusion Programming Guide For Control4 Controllers

Version 2.5  
February 2011  
Copyright Fusion Research

**Fusion Tech Support: 925.217.1233**

## Overview:

This guide is intended as an overview of how to implement the Control4 driver to control Fusion media products. This guide will cover everything a Control4 installer will need to know to successfully install Fusion media products in a Control4 project.

This guide assumes that you are already familiar with Control4's Composer software and will focus on how to use the Fusion driver in Composer.

**This driver offers 2-way control for movies-only, the driver will control Fusion's music & photos, however it does not support 2-way for music & photos.**

This guide does not cover the installation or use of Fusion products, for a complete understanding of the how to install and use a Fusion system, please refer to the appropriate installation manual that came with your system, or please visit Fusion's website [www.fusionrd.com](http://www.fusionrd.com).

Fusion technical support is available Mon-Fri 8AM-5PM PST (925) 217-1233



*Fusion has been a consistent winner for Best Media Server over the years*



## Get Started with Composer

Be sure to use the latest version of Control4's Composer software (1.7 or higher), which is needed to setup and configure the driver. Fusion does not provide this software. Control4 provides instructions on the complete use of the Composer software.

**This driver also requires the latest updates for your Fusion system, if your system was purchased prior to March 1, 2010, please check with Fusion to get your server updated prior to using this driver.**



*We also recommend downloading your Fusion Control4 driver from our website to ensure that you are getting the very latest version available for your system, including any new release notes on possible new features.*

### Installing your Fusion driver into Composer:

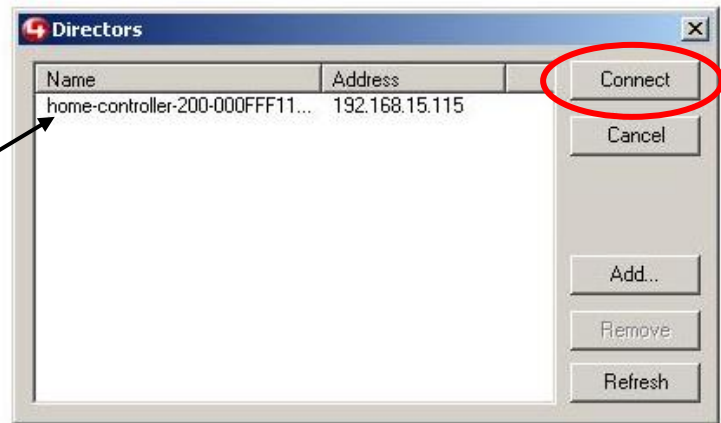
Composer looks for drivers in the user's My Documents\Control4\Drivers\ folder. (We suggest downloading the latest Fusion Control4 driver from our website [www.fusionrd.com](http://www.fusionrd.com)). Please copy your Fusion driver to that directory on your computer before running Composer. *If Composer is already running when you copy the driver to its final location, Composer must be closed and restarted before the driver will be available.*

Open your Control4 Composer application and choose "Director on Local Network"



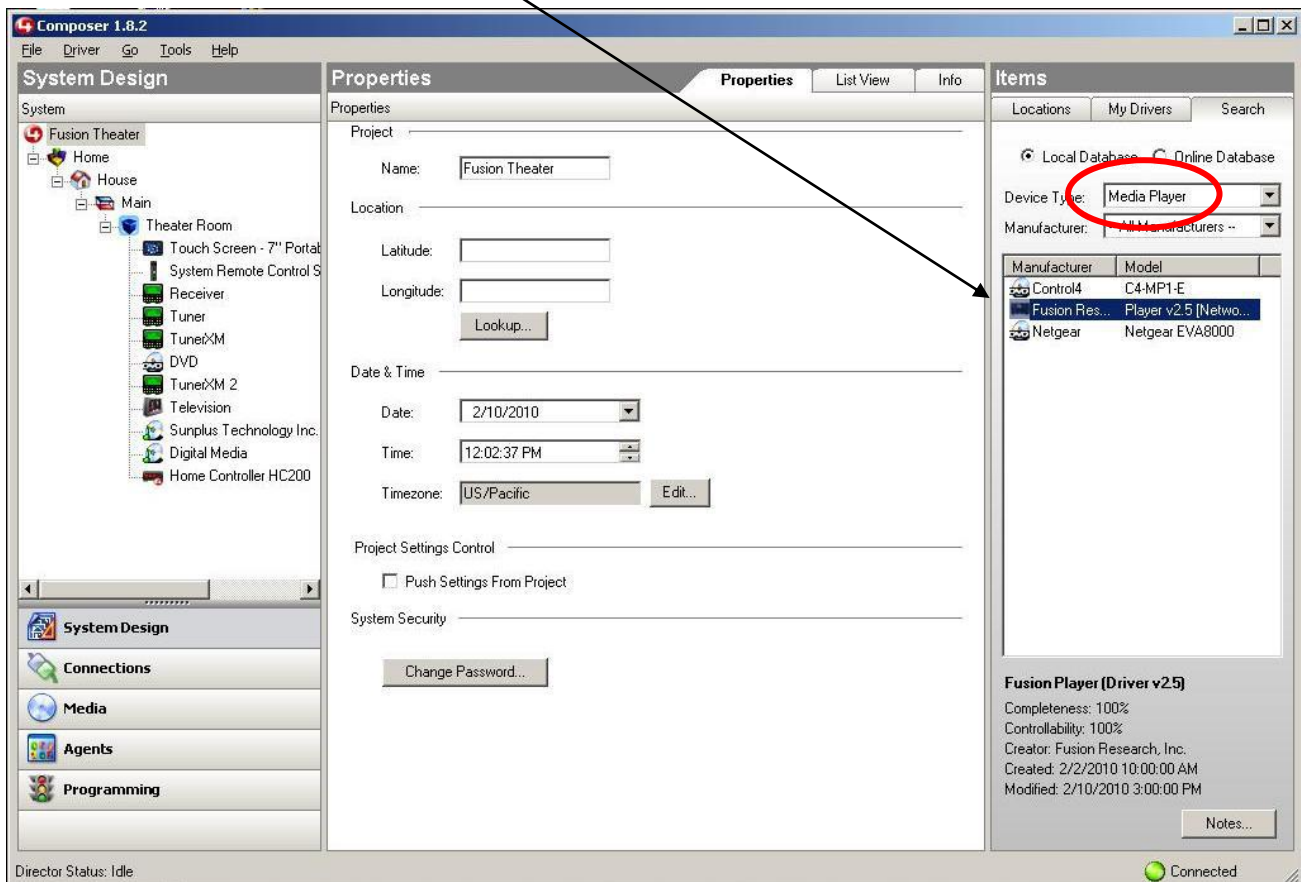
Once you have clicked on the Director on Local Network icon, you will be presented with a list of Directors on your system.

If you have more than one Director, make sure that you select the one that is intended to control your Fusion system.



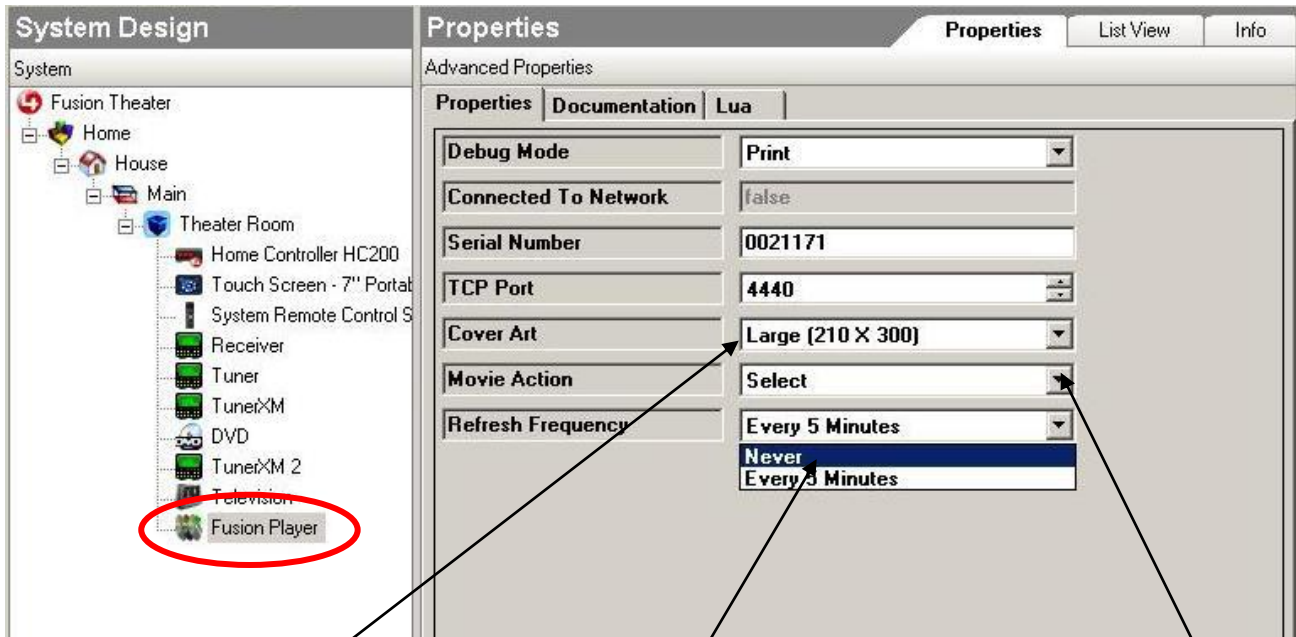
## Add & configure your Fusion driver:

Next you will need to add your downloaded Fusion driver. Use the Search tab, select "Local Database" and in the dropdown for Device Type, select **Media Player**. This will filter the available drivers to a short list. You should see the Fusion "Fusion Player v2.62" driver. Double-click the driver entry to add it.



Once you have added your driver go to "System Design" & click on the **Fusion Player** in your list of devices that you will see on the left side of the application.

You will then input your serial number, (including the zeros in the beginning of the number as shown).



**Cover Art Size:**

You will need to set your cover art resolution so that you don't overload the Director if you have a very large collection; here are your suggested parameters:

- Large for around 500 movies (default)
- Medium for 500 to 1000
- Small for 1000+

**Movie Action:**

This option allows you to decide how the Fusion system will function when a movie is selected in the Control4 interface:

- Highlight - goes to cover-art of the movie selected
- Select** - brings up the detail window (recommended)
- Play - plays the movie selected

**Movie Refresh:**

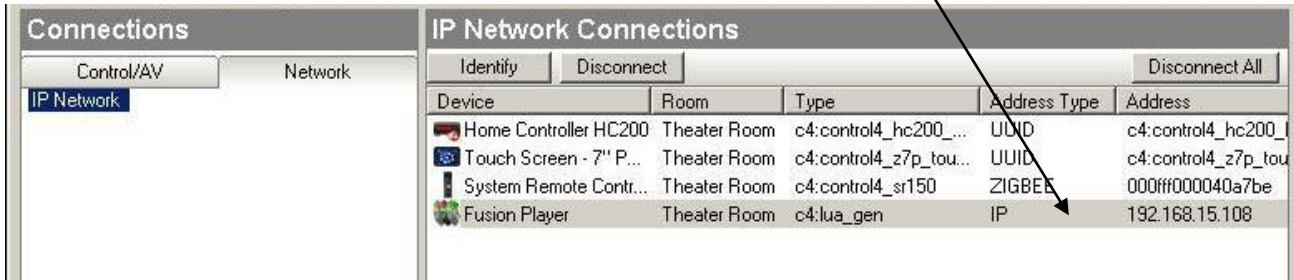
This option turns on or off the refresh of movie information from the Fusion system to the Control4 Director. You must set the **Server** refresh to **Every 5 Minutes**.



**Players** must be set to "Never" on the refresh, only the server should be set to update the cover art & meta data.

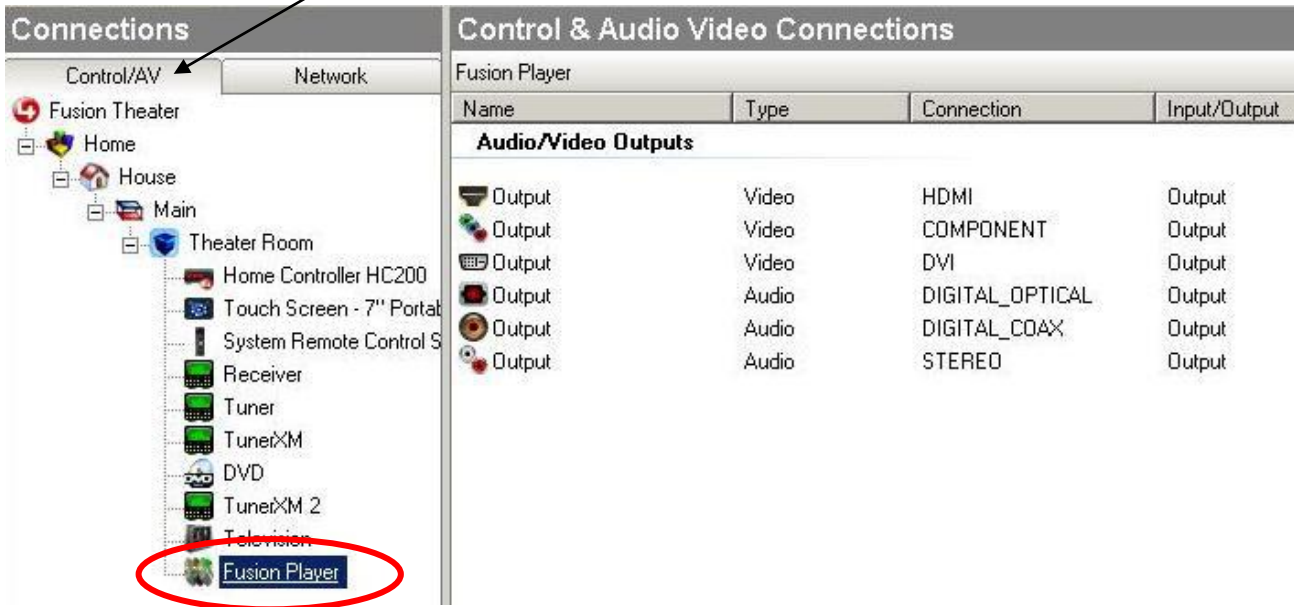


Go to “connections” on the left side of the interface, and select the fusion driver again, select the network tab on top and enter in your servers IP address by right clicking on the device.

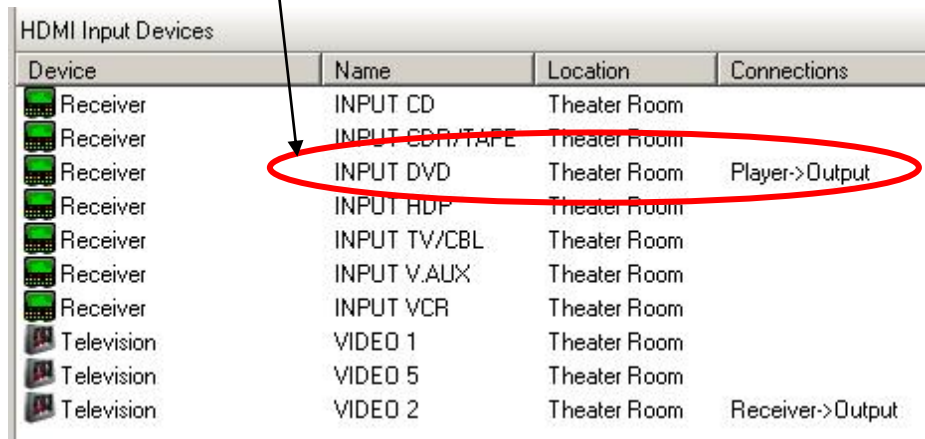


*When installing a Fusion Server or Player, you should always assign it a static IP, so that it will never be changed by the router and so that the Director will always know the correct IP address.*

Within connections click on the control/AV tab and put in your connected to programming for your video and audio connections



Click and drag to the appropriate inputs on your receiver or television, as you would for any device for Control4 setup



Device	Name	Location	Connections
Receiver	INPUT CD	Theater Room	
Receiver	INPUT CDR/TAPE	Theater Room	
Receiver	INPUT DVD	Theater Room	Player->Output
Receiver	INPUT HDP	Theater Room	
Receiver	INPUT TV/CBL	Theater Room	
Receiver	INPUT V.AUX	Theater Room	
Receiver	INPUT VCR	Theater Room	
Television	VIDEO 1	Theater Room	
Television	VIDEO 5	Theater Room	
Television	VIDEO 2	Theater Room	Receiver->Output

### **Congratulations, your driver should be ready to use with your Fusion system!**

As a reminder, if you are having any trouble with the two-way portion of the driver, and your Fusion system was purchased before March 1, 2010, you will need a special update for the driver to communicate with Control4.

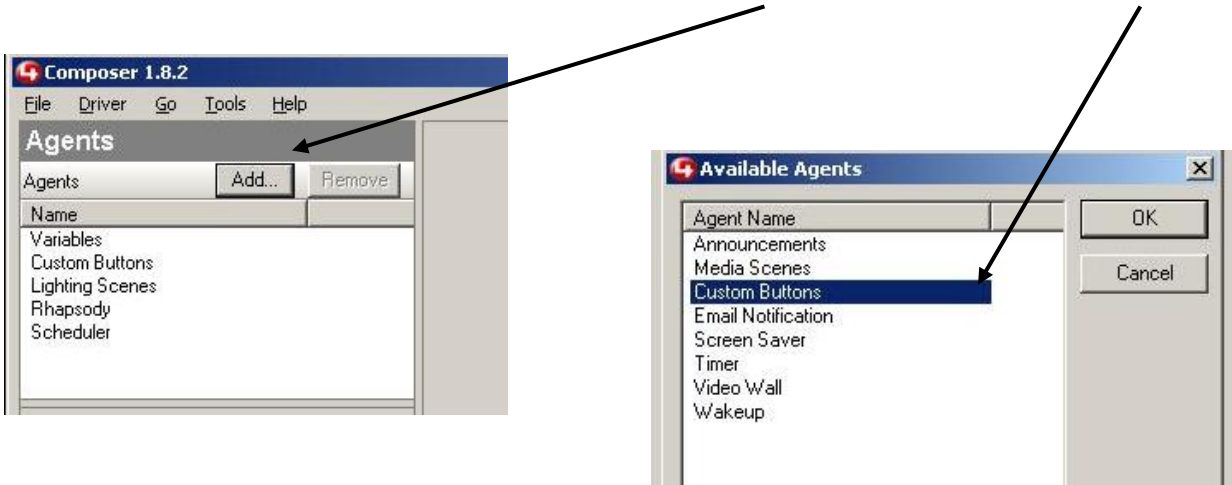
The balance of this guide covers adding a custom button to manually reset all movie data on your Control4 Director should the system require this. **We highly recommend that you program for this button so that in the unlikely event that the two systems get out of sync, you can easily reset all movie data in one easy step.**



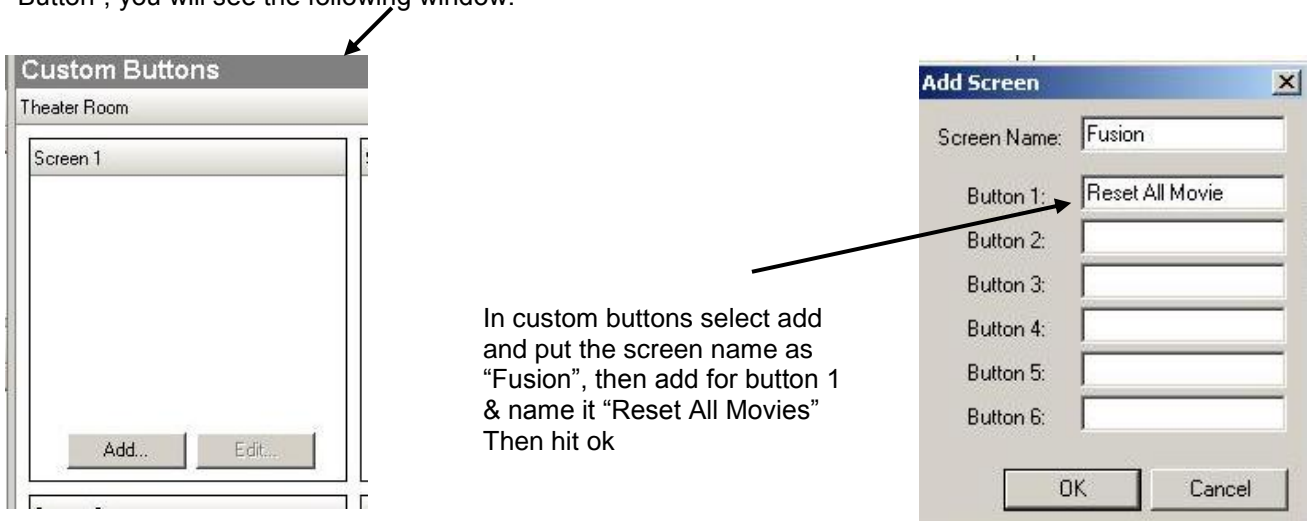
**Adding a player to your system:** When adding a player to your network, you must put in the **Server's IP address**, and then put in the **serial number of the player**. You would then follow the same procedure for each additional player added to the network.

## Creating your custom “Reset all Movies” button

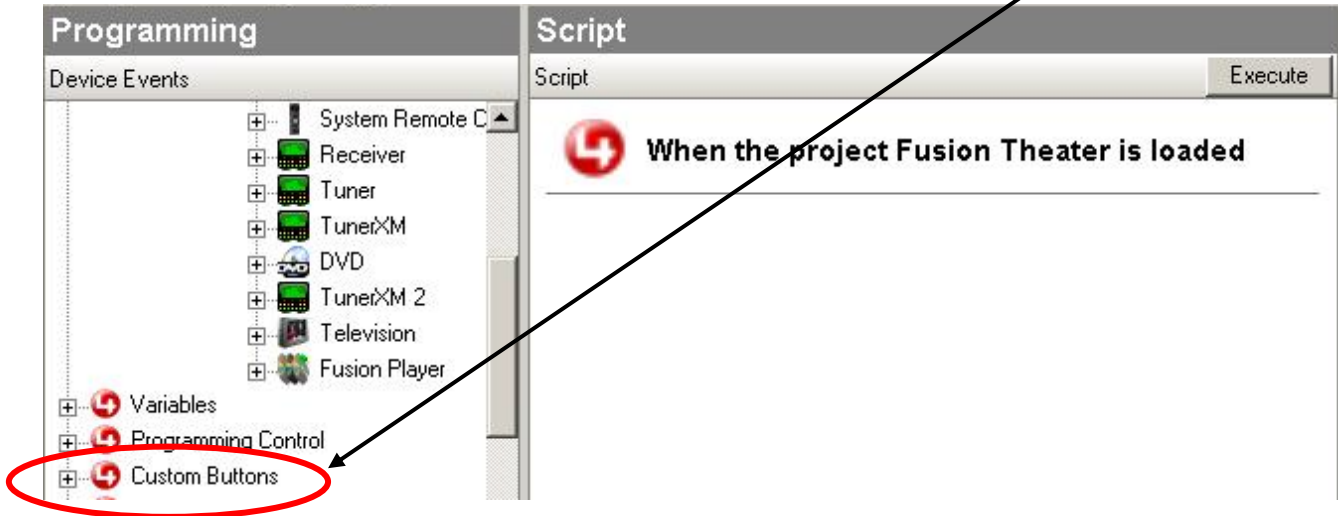
We suggest creating a custom button under the “Agents” area of Composer for the purpose of resetting all your movie cover art and data should the system ever require it. To begin building your button, go to the “Agents” area of Composer & click on “Add” then select “Custom Buttons & “OK”



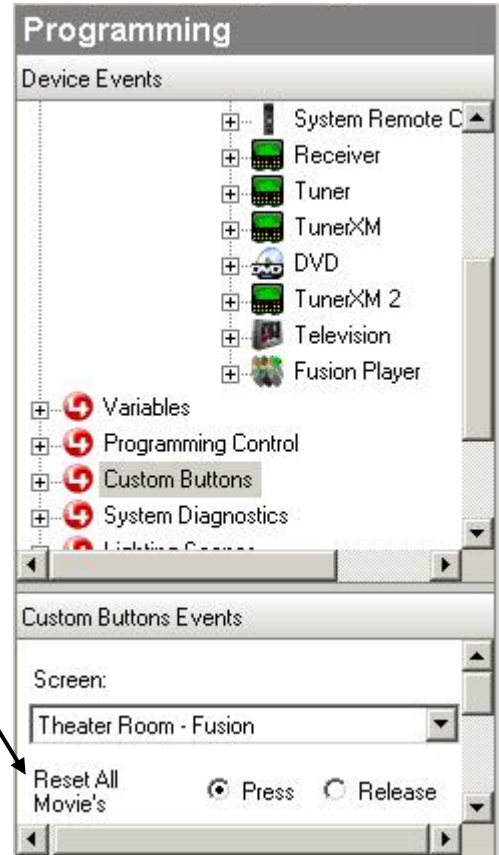
Under Agent Name click on custom buttons and under rooms select your theater. Once you select “Custom Button”, you will see the following window.



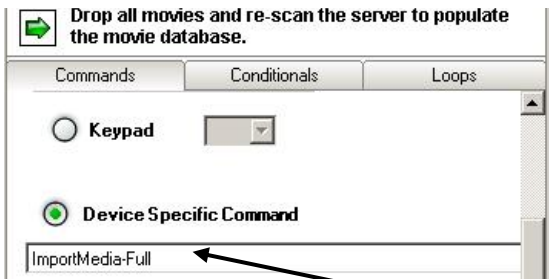
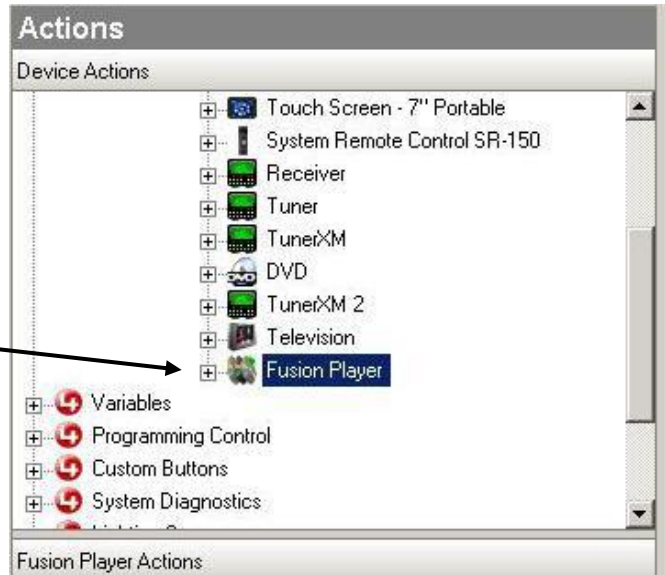
Next go to programming tab (on the left side of Composer), under device events scroll down to custom buttons and click on that.



Under "Custom Buttons Events" make the selection that you just created, in the room of your project called "Fusion". Then click on the bubble that says "Reset All Movie's"

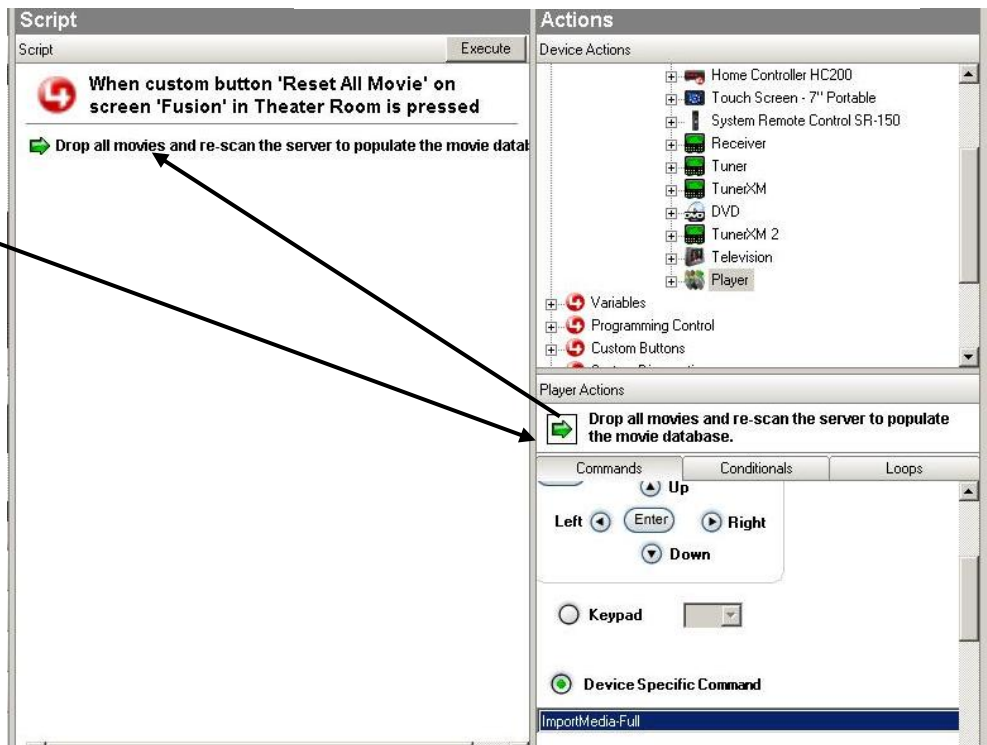


Next on the right side under "Device Actions", scroll down and select the fusion player driver, and scroll down a little in the player actions right under device actions



Click on the radio button that says device specific command & on the drop down box select "ImportMedia-Full"

Once selected click and drag the green right arrow at the top of the player actions window, and drag it to script.



Once you have completed all steps for creating your new button, refresh your navigator and all the control properties should be there and you should have control of your Fusion system.

There now will be a button on the left side of your interface that says “Fusion” which you created. When you select that you will see the button, “Reset All Movies”. This button will manually scan your movies from the Fusion Server into your Control4 database.

This proceed should only need to happen when you first setup your system or on any occasion when the director has lost its movies.



**Remember that if you have zone players with your Encore or Genesis unit or a second Studio system on your network. You must set the server to “Every 5 minutes” on refresh. (as noted on page 5).**

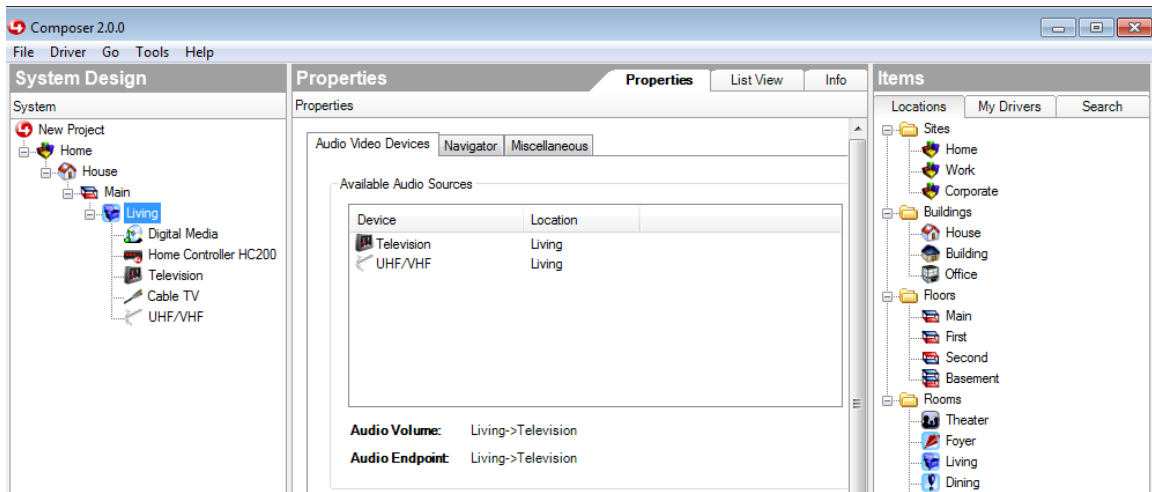
**Failure to set this properly will result in duplicated cover art for each addition zone player you have on the system. If this problem occurs, set all the zone players to “Never” then you must use the clear media button on all your controllers to reset your cover art.**

## Add Boxee control to your Fusion Media Server

1) Make sure you have the latest drivers, you will need the standard Fusion C4 driver, plus the Fusion “Virtual Switch” C4 driver.

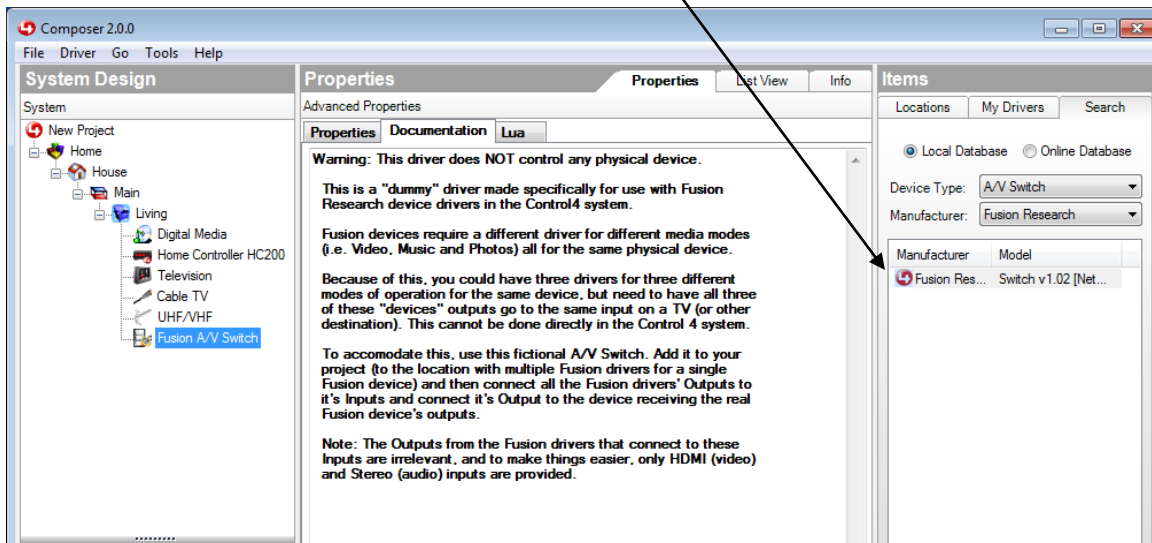
Driverworks\_MediaPlayer\_v2.62\_Network\_FusionResearch\_Player.c4i  
Driverworks\_MediaPlayer\_v1.02\_Dummy\_FusionResearch\_Switch.c4i

2) Begin with NO fusion devices in the Room of your project

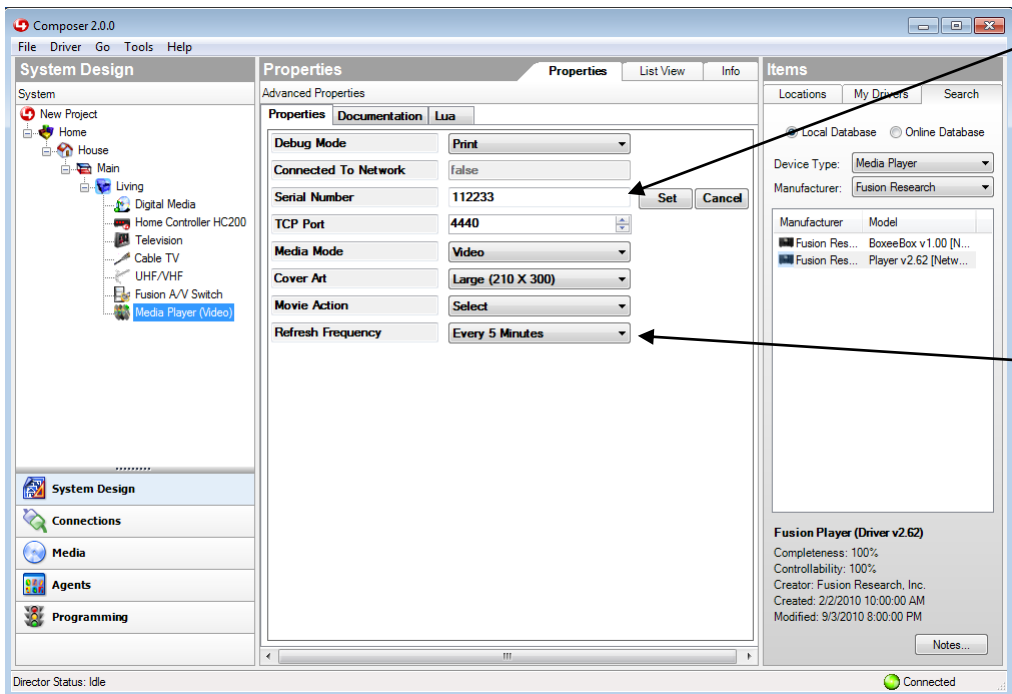


3) Add the Fusion Virtual A/V Switch

This is a “virtual” switch. It does NOT control any physical device. Instead it is used to allow multiple Fusion Media Player drivers to control the same piece of hardware.



4) Add the Fusion Media Player driver for the Video mode of the player.  
 (There must be two Fusion drivers, one for the movie playback and one for the Boxee playback)



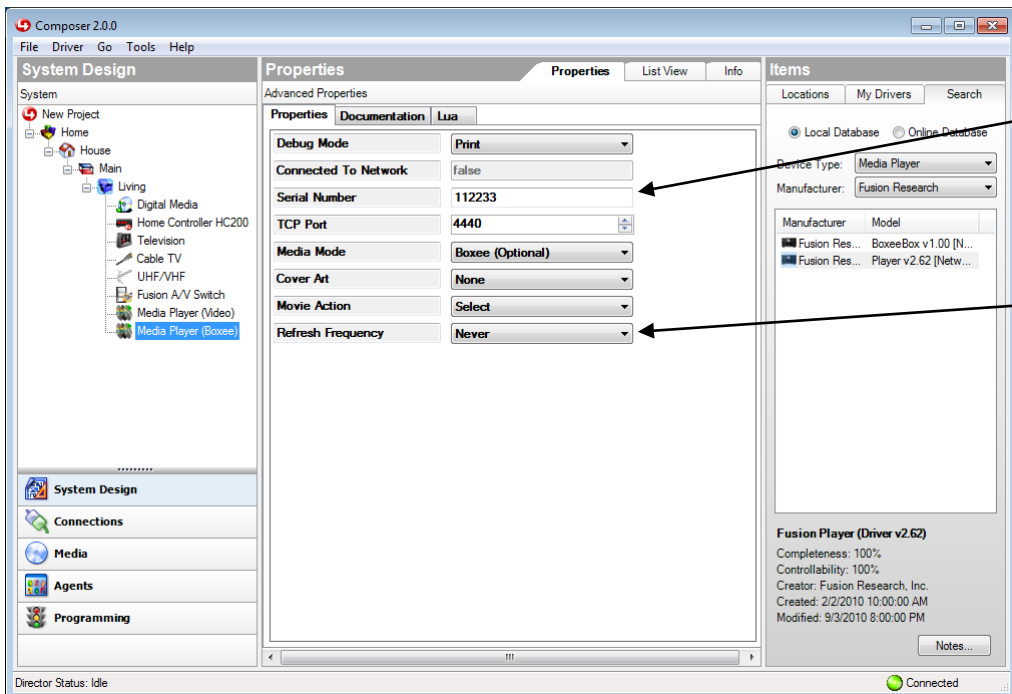
Enter the player's serial number and choose "Video" in the Media Mode of the driver's properties.

This configures the driver to activate the player's "video mode" when selected.

**Note:**  
 Only the Video mode driver for the "main server" should be configured with a Refresh Frequency of Every 5 Minutes.

All other Fusion devices including Virtual Switch and players should be set to Never.

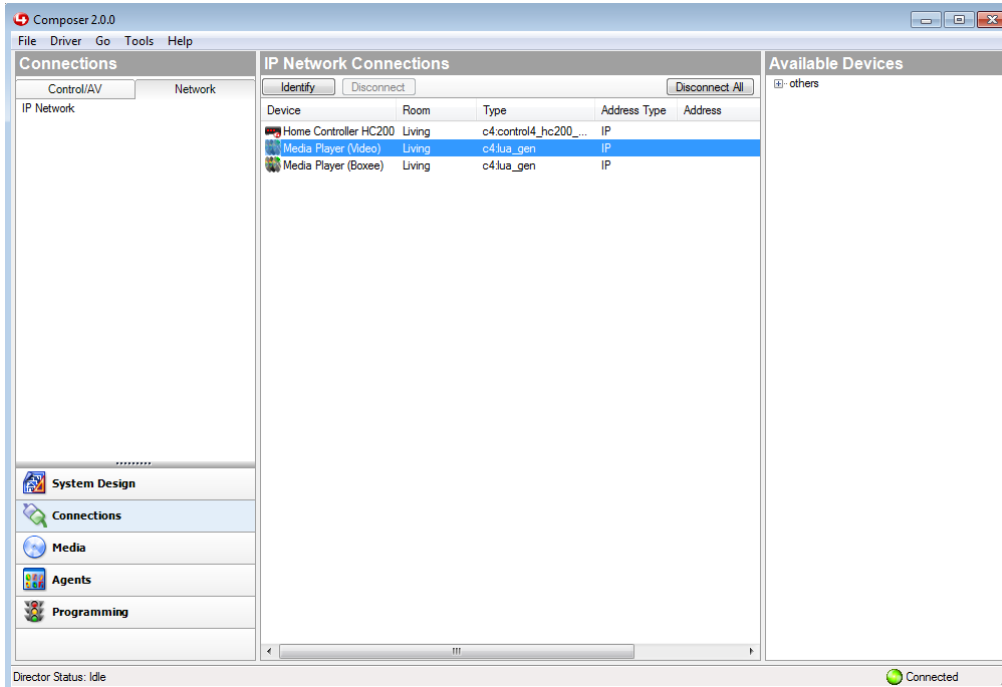
5) Add the Fusion Media Player driver for the Boxee mode of the player.



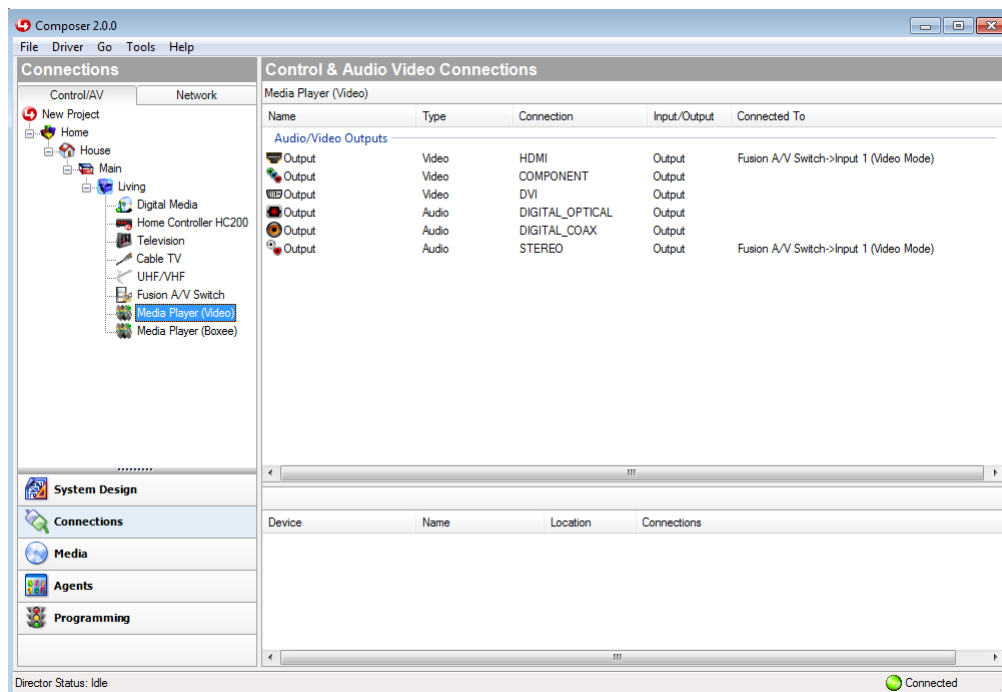
Enter the player's serial number and choose "Boxee" in the Media Mode of the driver's properties. This configures the driver to activate the player's "Boxee mode" when selected.

All other Fusion devices including Virtual Switch and players should be set to Never.

6) Configure ALL Fusion Media Player drivers with the IP address of the Server.



7) Connect the Fusion Media Player (Video mode) to the Fusion A/V Switch.



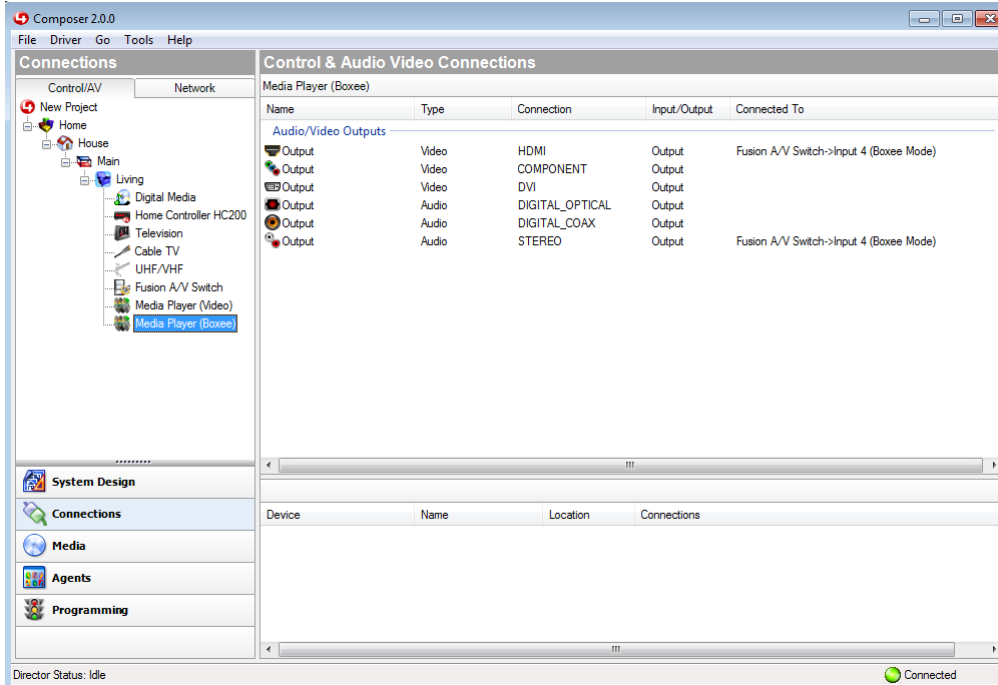
You MUST use the Player's HDMI video output and Analog audio output.

Connect these to the A/V Switch's inputs for the appropriate mode (Video).

**Note:**

The outputs selected here do NOT affect the outputs you physically connect to your audio or video destination device.

8) Connect the Fusion Media Player (Boxee mode) to the Fusion A/V Switch.



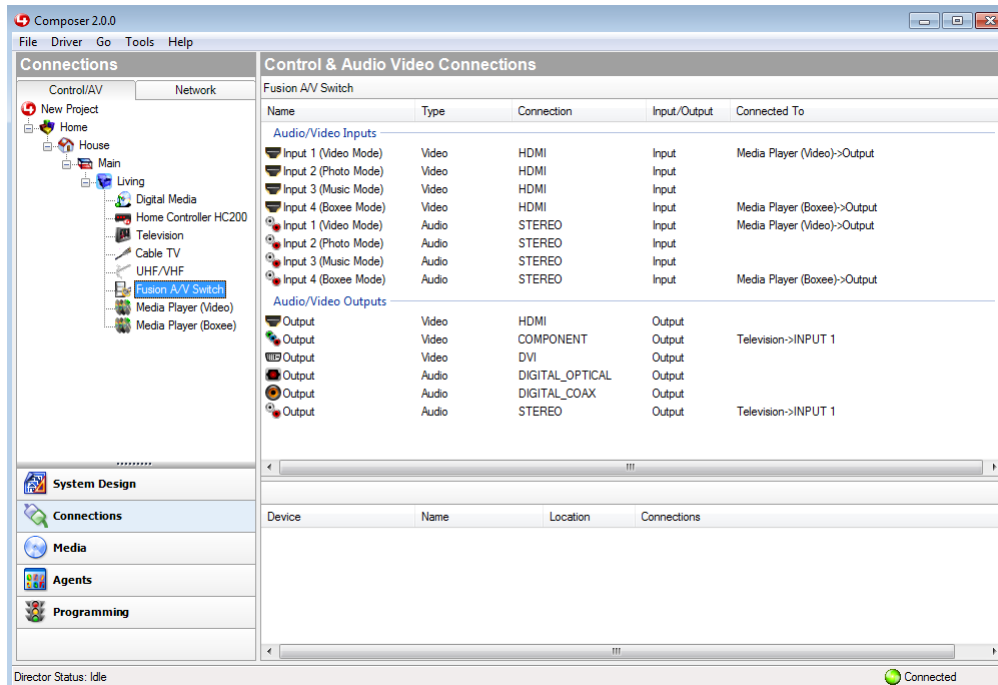
You MUST use the Player's HDMI video output and Analog audio output.

Connect these to the A/V Switch's inputs for the appropriate mode (Boxee).

**Note:**

The outputs selected here do NOT affect the outputs you physically connect to your audio or video destination device.

9) Connect the Fusion A/V Switch to your audio and video destination device(s).



Here you MUST use the appropriate outputs on the Fusion A/V Switch to connect to the correct inputs on your destination device(s).

This ensures the destination device's source selection is appropriately managed by the Control 4 system.